

MONTHLY MEMBERSHIP PROGRESS REPORT

LOCATION MAINE

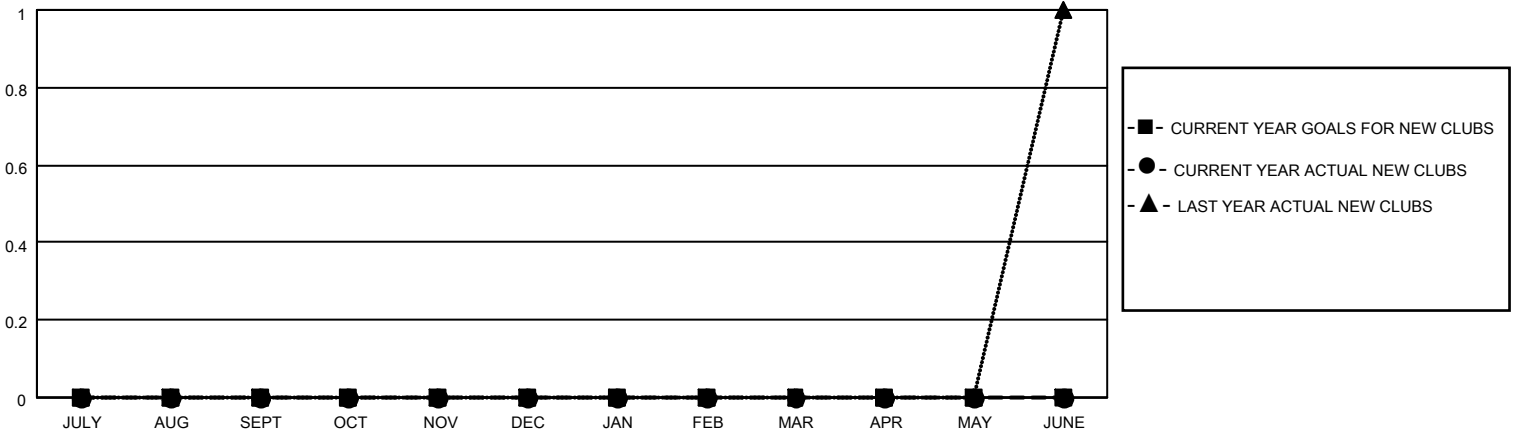
District 41

Results as of: 4/30/2022

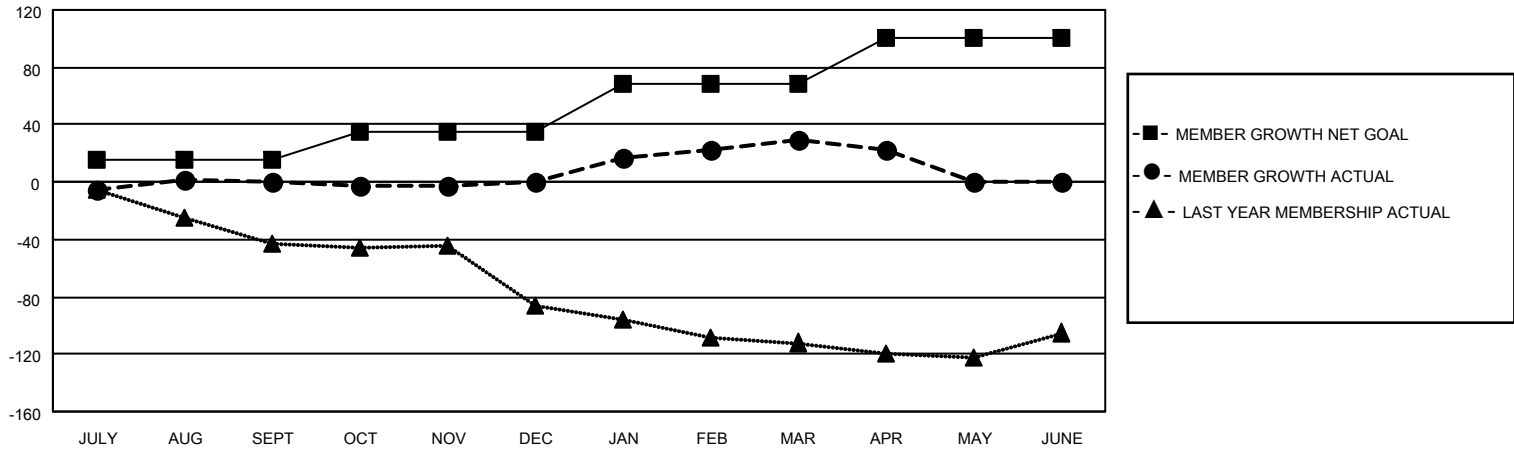
| Clubs | | | |
|-----------------------|---------------|-----------|---------------|
| RESULTS FOR 2021-2022 | | | |
| QUARTER | NEW CLUB GOAL | NEW CLUBS | DROPPED CLUBS |
| JULY/AUG/SEPT | 0 | 0 | 0 |
| OCT/NOV/DEC | 0 | 0 | 0 |
| JAN/FEB/MAR | 0 | 0 | 0 |
| APR/MAY/JUNE | 0 | 0 | 0 |

| Members | | | |
|-----------------------|------------------------|----------------------|--|
| RESULTS FOR 2021-2022 | | | |
| QUARTER | MEMBER GROWTH NET GOAL | MEMBER GROWTH ACTUAL | DROPPED MEMBERS ACTUAL (including transfers) |
| JULY/AUG/SEPT | 15 | 27 | 25 |
| OCT/NOV/DEC | 20 | 56 | 49 |
| JAN/FEB/MAR | 34 | 50 | 17 |
| APR/MAY/JUNE | 31 | 8 | 13 |

GOALS AND ACTUAL NEW CLUBS CUMULATIVE



GOALS AND ACTUAL MEMBERS CUMULATIVE



| | |
|------------------------|------------|
| DROPPED CLUBS: 0 | |
| DROPPED MEMBERS | |
| DECEASED | 21 |
| CLUB CANCELLED | 0 |
| OTHER | 83 |
| TOTAL | 104 |

41 CLUBS OF 72 ADDED 1 OR MORE NEW MEMBERS

[CLICK HERE FOR CUMULATIVE MEMBERSHIP DATA](#)

| <u>GENDER DISTRIBUTION</u> | |
|--|----------------|
| MALE | 1,285 (65.00%) |
| FEMALE | 692 (35.00%) |
| NON BINARY | 0 (0.00%) |
| PREFER NOT TO ANSWER | 0 (0.00%) |
| TOTAL FAMILY UNIT MEMBERS | 460 |
| FAMILY MEMBERS PAYING HALF DUES | 238 |